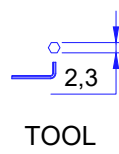
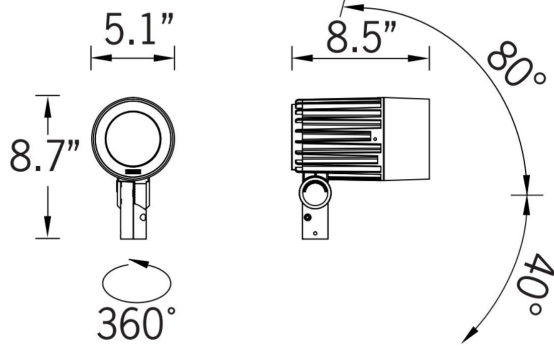


INSTALLATION AND SERVICE MANUAL

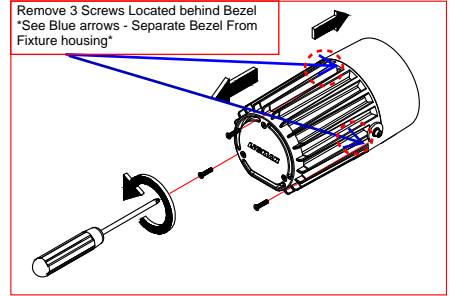
LIGMAN
LIGHTING USA

For Installation of COB Module Assembly on Odessa 2 Floodlight
Model. UOD-2XXXX

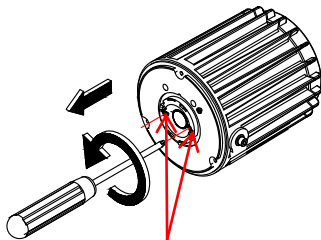
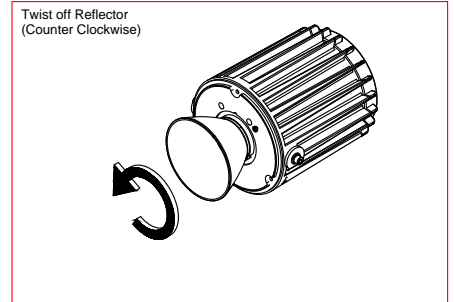
Product drawing (dimensions) SUITABLE FOR WET LOCATIONS



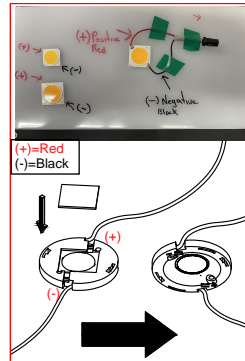
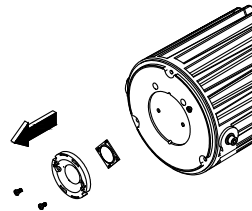
Remove 3 Screws Located behind Bezel
*See Blue arrows - Separate Bezel From
Fixture housing*



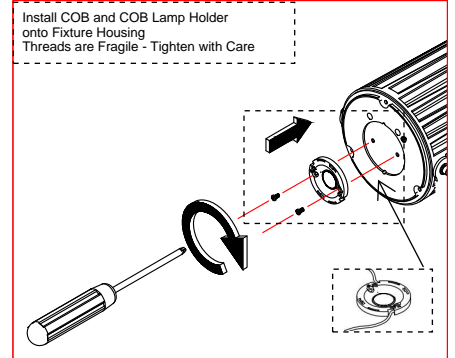
Twist off Reflector
(Counter Clockwise)



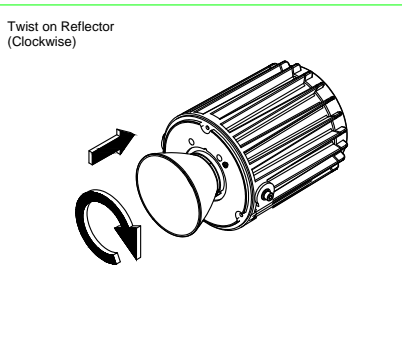
Remove (2) Screws on COB Holder



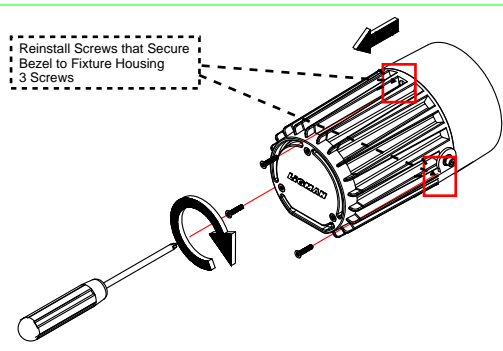
Install COB and COB Lamp Holder
onto Fixture Housing
Threads are Fragile - Tighten with Care



Twist on Reflector
(Clockwise)



Reinstall Screws that Secure
Bezel to Fixture Housing
3 Screws



Notice to installer :

1.WIRING INSTRUCTIONS Warning : RISK OF FIRE AND ELECTRICAL SHOCK. : FIXTURE MUST BE INSTALLED BY A QUALIFIED ELECTRICIAN ONLY>FIXTURE IS INTENDED FOR INSTALLATION IN ACCORDANCE WITH THE NATIONAL ELECTRICAL CODE, LOCAL AND FEDERAL CODE SPECIFICATIONS. DISCONNECT POWER BEFORE SERVICING.

Ligman Lighting USA

7144 NE Progress Court, Hillsboro
Oregon, 97124, USA
Tel : 503 645 0500 | Fax : 503 645 8100

www.ligmanlightingusa.com

2/25/2025-DZ-REV